

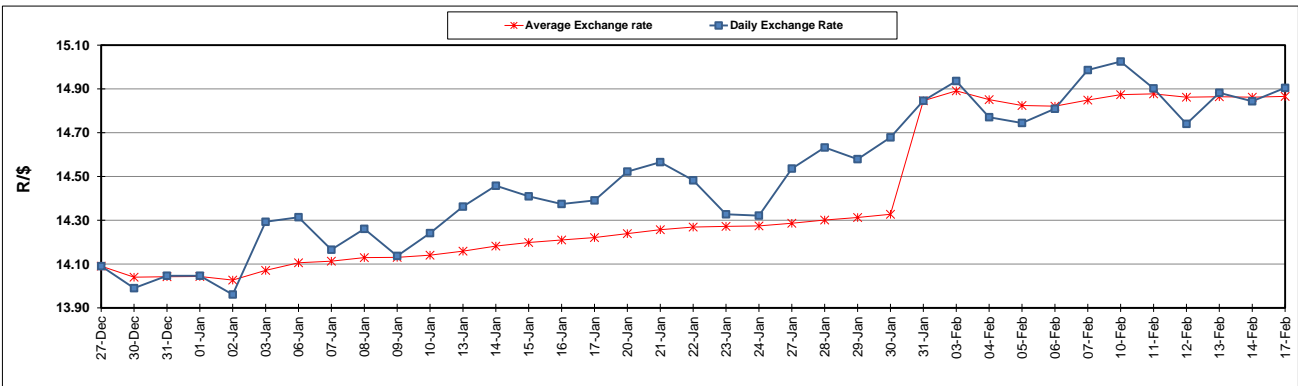
	PETROL 95 ULP	PETROL 93 ULP & LRP	DIESEL 0.05%	DIESEL 0.005%	ILL. PAR.
GAUTENG PUMP PRICE (SA c/l) AS FROM 05/02/2020	1,603.000	1,571.000	-	-	-
WHOLESALE PRICE (SA c/l) AS FROM 05/02/2020	-	-	1,457.260	1,462.660	924.728
SINGLE NATIONAL MAXIMUM RETAIL PRICE	-	-	-	-	1,176.000
BASIC FUEL PRICE - 17/02/2020 (SA c/l)	681.790	668.800	693.032	699.580	675.183
PRESS RELEASE CONTRIBUTION TO BFP 05/02/2020 - 17/02/2020 (SA c/l)	686.970	664.970	737.630	743.030	734.128
UNIT OVER/(UNDER) RECOVERY - 17/02/2020 (SA c/l)	5.180	(3.830)	44.598	43.450	58.945
AVERAGE BASIC FUEL PRICE 31/01/2020 - 17/02/2020	667.791	656.285	685.886	691.990	669.826
AVERAGE UNIT OVER/(UNDER) RECOVERY 31/01/2020 - 17/02/2020	22.429	11.935	52.995	52.290	65.052

ANALYSIS MOVEMENT OF AVERAGE OVER/(UNDER) RECOVERY

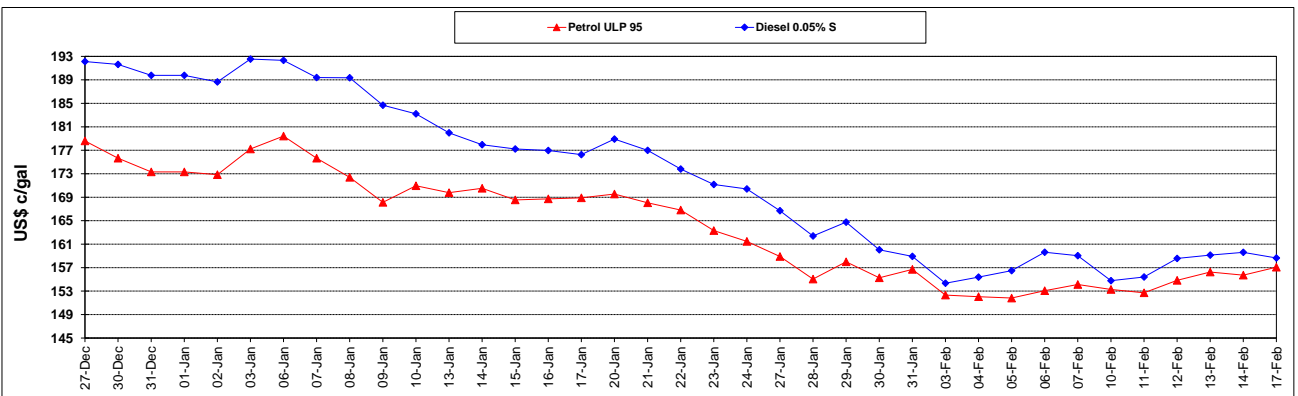
	PETROL 95	PETROL 93	DIESEL 0.05%	DIESEL 0.005%	ILL. PAR.
- MOVEMENT IN INTERNATIONAL PRODUCT PRICES	46.614	35.704	77.835	77.352	89.311
- MOVEMENT IN EXCHANGE RATE	(24.185)	(23.769)	(24.841)	(25.062)	(24.259)
AVERAGE UNIT OVER/(UNDER) RECOVERY 31/01/2020 - 17/02/2020	22.429	11.935	52.995	52.290	65.052

R/\$ EXCHANGE RATE - (R/\$14.9048 - 17/02/2020)

EXCHANGE RATE USED IN BASIC FUEL PRICE



INTERNATIONAL PRODUCT PRICES OF BASKET USED IN BASIC FUEL PRICE



BASIC FUEL PRICE IN SA CENTS PER LITRE

